



£3,500 PCM Mortimer Road | Filton | Bristol | BS34 7LG

www.kendallharper.com | lettings@kendallharper.com

Kendall Harper

Nestled on Mortimer Road in the vibrant area of Filton, Bristol, this exceptional five-bedroom student house has been meticulously renovated to offer a modern and comfortable living experience.

Perfectly positioned for students, it provides easy access to the UWE Frenchay Campus and excellent transport links into the heart of Bristol.

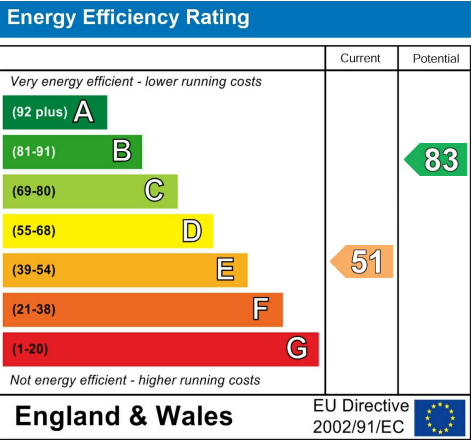
Upon entering, you are welcomed by a bright entrance hall that leads to a spacious sitting room, ideal for relaxation and socialising. The ground floor also features a convenient study or home working space, along with a contemporary kitchen and breakfast room, designed to cater to the needs of modern living. The kitchen is equipped with all the necessary amenities, making it a delightful space for cooking and dining.

The first floor boasts a stylish shower room and three generously sized double bedrooms, while the second floor offers an additional shower room and two more double bedrooms, ensuring ample space for all residents. Each bedroom is thoughtfully furnished and includes a television, providing a personal touch to each living space.

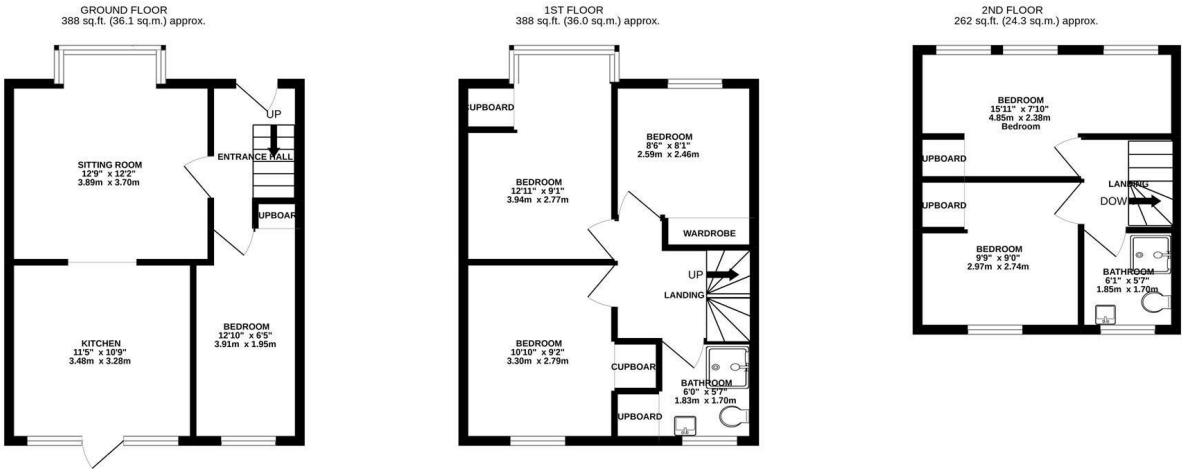
This property is further enhanced by high-speed Wi-Fi, two washing machines for added convenience, and driveway parking for two cars. The landscaped private rear garden offers a tranquil outdoor space, perfect for unwinding after a busy day.







These particulars, whilst believed to be accurate, are set out as a general outline only for guidance and do not constitute any part of an offer or contract. Intending purchasers should not rely on them as statements of representation of fact, but must satisfy themselves by inspection or otherwise as to their accuracy. No person in this firm's employment has the authority to make or give any representation or warranty in respect of the property.



Whilst every attempt has been made to ensure the accuracy of the floorplan contained here, measurements of doors, windows, rooms and any other items are approximate and no responsibility is taken for any error, omission or mis-statement. This plan is for illustrative purposes only and should be used as such by any prospective purchaser. The services, systems and appliances shown have not been tested and no guarantee as to their operability or efficiency can be given.

Made with Metropix ©2022